

# Cigna VHIS Series – Flexi Plan

Voluntary Medical Insurance Scheme for Civil Servants and Non-civil Servants employed by the Hong Kong Government



Civil Servants and Non-civil Servants employed by the Hong Kong Government and their families who successfully apply for a **Cigna VHIS Series – Flexi Plan** during the specified promotion period will enjoy up to **30% discount on first year premium**.

## Key Benefits

- Tax deduction
- Up to HK\$30M Annual Benefit Limit\*
- Covering unknown pre-existing conditions
- Covering various cancer treatments
- Guaranteed renewal up to age of 100, with unlimited Lifetime Benefit Limit
- Five deductible options\*

## Extra Protection and Value-added Services

- Exclusive discount on virtual consultations and medication
- Cashless Medical Service
- Cigna Care Manager - our Care Managers will answer all your health related questions and need for Major or Complex surgeries
- Worldwide Emergency Assistance Services

## Promotion Period: 1 July 2025 - 30 June 2026

	First Year Premium Discount	Renewal Year Premium Discount
Single Policy	20%	15%
Child's policy enrolls with one of the parents <sup>#</sup> (aged 18 or below)	30%	15%

The above promotion is subject to terms and conditions. For any enquiries, please contact us via:

### Plan details:

[www.cigna.com.hk/en/voluntary-medical-insurance-scheme](http://www.cigna.com.hk/en/voluntary-medical-insurance-scheme)



**Enroll now:**  
**8107 0799**

#### Remarks:

\* Applies only to the Cigna VHIS Series – Flexi Plan (Superior).

<sup>#</sup> Child discount is subject to specific conditions. Please refer to the Terms and Conditions – Clause 5 for details.

#### Terms & Conditions for the offer:

- This promotion (the "Promotion") is organized and sponsored by Cigna Worldwide General Insurance Company Limited ("Cigna Healthcare"). The Promotion is valid from 1 July 2025 to 30 June 2026, both dates inclusive (the "Promotion Period").
- To qualify for the Promotion, new applications for the Cigna VHIS Series – Flexi Plan (the "Plan") must meet all of the following criteria:
  - be received by Cigna Healthcare during the Promotion Period and be solely based on Cigna Healthcare's records;
  - be underwritten and issued by Cigna Healthcare on or before 31 July 2026;
  - each insured person shall be entitled to the Promotion once.
- Policyholder or insured person under an existing policy of the same Plan which was cancelled within the previous 12 months and re-applied for the same Plan are not eligible for the Promotion.
- To qualify for the offer, applicants must be Hong Kong Civil Servants or Non-Civil Servants employed by the Government of the Hong Kong Special Administrative Region, or staff members including contract and term staff employed by The Hong Kong Housing Authority, The Hospital Authority, or Legislative Council Secretariat, or their spouse or children.
- For child's policies enrolled with one of the parents:
  - The child must purchase together with one of the parents; or
  - The child policy must be purchased while the parent's policy is in force (not required to purchase the same area of cover). When either of these conditions are met, the child will be eligible for the applicable discount as specified in the promotion.

The discount will cease to apply from the next policy anniversary date of the child policy if:

  - the parent's policy is terminated; or
  - the child reaches age 18.
- Unless otherwise specified, this promotional offer cannot be used in conjunction with other promotional offer applicable to the Plan at the same time, including but not limited to the standard discount being offered to the public.
- If the relevant policy of the Plan under the Promotion is cancelled within the cooling off period (if applicable), the refund of premium shall be the actual amount paid after discount.
- All application(s) for the Plan(s) are subject to underwriting and approval by Cigna Healthcare. Cigna Healthcare reserves the right to accept or decline any application.
- Applicants are responsible for reviewing these terms and conditions. By participating in the Promotion, applicants agree and accept to be bound by these terms and conditions.
- Cigna Healthcare reserves the right to change any of the terms and conditions of the Promotion without prior notice. In case of any disputes, Cigna Healthcare's decision shall be final.
- This leaflet contains terms and conditions of the promotion only and does not represent the full terms of the policy. For details of the features, contents, terms, conditions and exclusions of the Cigna Healthcare products in this leaflet, please refer to the relevant product brochure(s) at [www.cigna.com.hk](http://www.cigna.com.hk) and the policy provision(s).
- The English version of the terms and conditions of the Promotion shall prevail if there is any discrepancy between the English and Chinese versions.



Hospital / Surgical  
General Insurance



# Cigna VHIS Series

Flexi Plan (SMM)

Flexi Plan (Superior)







# About Cigna Healthcare

Cigna Healthcare is the health benefits provider of The Cigna Group committed to improving the health and vitality of those we serve.



A global footprint with sales capacity and operations in **MORE THAN 30 MARKETS AND JURISDICTIONS**<sup>1</sup>



**RANKED 16<sup>TH</sup>** on the 2024 Fortune 500 List



More than **182 MILLION CUSTOMER RELATIONSHIPS** around the world<sup>1</sup>



Cigna Healthcare Hong Kong is named a '**CARING COMPANY**' by the Hong Kong Council of Social Service



More Than **70,000 EMPLOYEES** around the world<sup>1</sup>

## Remarks:

1. The above data is related to Cigna Healthcare under The Cigna Group and it is for reference only. The information provided is as of March 2025 and is subject to change.

# Why should I consider the Cigna VHIS Series?

## Tax deduction<sup>1</sup>



- The maximum premium allowed for tax deduction is **HK\$8,000** per Insured Person per tax year.

## No fear of medical expenses



- Provides full compensation of medical expenses with an Annual Benefit Limit of up to **HK\$30 million** per year and unlimited Lifetime Benefit Limit.

## Covering various cancer treatments



- All cancer treatment expenses are **fully covered**<sup>2,3</sup>, including various common non-surgical cancer treatments<sup>4</sup>.

## Covering unknown Pre-existing Conditions



- Full cover from **day 1** of the Policy Effective Period<sup>5</sup>.

## Guaranteed renewal



- Guaranteed renewal up to **Age of 100**, no matter how much you claim for illness(es) after the Policy has become effective, the premium will only be adjusted according to your Age<sup>6</sup>.

## Outpatient surgeries in hospitals and clinics



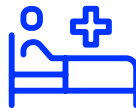
- Surgeries performed in clinics or day case units of hospitals **can also be covered** with no minimum duration of stay required.

## Taking care of your emotional health



- Provides coverage for psychiatric treatments during hospitalization.

## Pre- and post-Confinement/Day Case Procedure outpatient care



- **Covers all** Pre- and Post-Confinement/Day Case Procedure outpatient care<sup>2,3,7</sup>.

## Flexible deductible options<sup>2</sup>



- Features up to **five deductible options**, and you can also choose to lower or remove your deductibles once without re-underwriting<sup>8</sup>.

### Remarks:

1. Tax deduction is subject to the latest rules and regulation of Inland Revenue Department of Hong Kong Special Administrative Region. For details of tax deduction, please visit the websites of the Inland Revenue Department of Hong Kong Special Administrative Region ([www.ird.gov.hk/eng/](http://www.ird.gov.hk/eng/)) and VHIS ([www.vhis.gov.hk/en/](http://www.vhis.gov.hk/en/)) or consult with a professional tax advisor.
2. Applicable to Cigna VHIS Series - Flexi (Superior) only.
3. Subject to the Annual Benefit Limit.
4. Covers a number of non-surgical cancer treatments including chemotherapy, radiotherapy, targeted therapy, immunotherapy and hormonal therapy etc. Proton therapy, gamma knife and cyber knife are radiation treatments that are also covered as radiotherapy.
5. Refer to Important Information for details of Pre-existing Conditions.
6. The premium level is subject to change from time to time due to medical inflation.
7. Pre- and post-Confinement/Day Case Procedure outpatient care under Cigna VHIS Series - Flexi (Superior) covers:
  - I prior outpatient visit or Emergency consultation per Confinement/Day Case Procedure taking place more than 30 days before admission or Day Case Procedure;
  - All prior outpatient visits or Emergency consultations per Confinement/Day Case Procedure taking place within 30 days before admission or Day Case Procedure; and
  - All follow-up outpatient visits per Confinement/Day Case Procedure (within 90 days after discharge from Hospital or completion of Day Case Procedure)
8. You can choose to reduce or remove your deductibles without re-underwriting within 30 days before the renewal date for one time at any one of the following Ages: 60, 65, 70, 75, 80 or 85.

# Extra protection and value-added services

Cigna Healthcare provides a suite of additional protection and value-added services for all Cigna VHIS Series clients, providing comprehensive care for your body and mind.

## Exclusive discount on virtual consultations and medication



Receive virtual medical consultations on the app to easily obtain doctors' advice and be able to get early diagnosis before your condition worsens.

Obtain medical advice from a range of general practitioners and specialists in Hong Kong without needing to leave your home.

Medication delivery to your door and referral services for a stress-free recovery.

## Cashless Medical Service<sup>1</sup>



Apply prior to your hospital admission and upon approval, we will pay the pre-approved amount to the medical service provider directly on your behalf. This allows you to focus on treatment and recovery without worrying about unexpected medical expenses.

## Unique one to one dedicated Care Manager Service<sup>2</sup> in Hong Kong



Cigna Healthcare understands that you want the best treatment possible when you are sick. If you find yourself in need of medical treatment, Cigna Healthcare can help you estimate the medical expenses needed and predict the circumstances you may face. You will be assigned a dedicated Care Manager through our healthcare concierge service, who will follow up on your hospital stay, surgery, or other treatment arrangements. In addition to getting maximum coverage for your medical expenses, you can also enjoy other care services through Cigna's healthcare concierge.

For more information, please refer to our "Healthcare Concierge Service" Leaflet.



Find out more about how our Care Managers provide healthcare concierge service for customers in actual situations

## Fast and easy online claim application



Simply login to MyCigna HK app to apply for claims anytime and anywhere.

Both hospitalization and outpatient claims can be submitted on the app no matter the size of the claim.

**No Claim Bonus**  
Extra coverage for Flexi Plan  
(Superior)<sup>3</sup>



As a reward for your efforts in maintaining good health, if you have not made any claim for three consecutive Policy Years, you will receive a free medical check-up coupon once every three years.

**Worldwide Emergency  
Assistance Services<sup>4</sup>**



If you are a frequent traveller, we can provide you with free of charge worldwide emergency travel and medical services while you are on the road. In case of medical emergency, we will provide you with up to US\$1,000,000 to arrange for your medical evacuation to an appropriate location for emergency medical treatment, or emergency medical repatriation to your home country/usual country of residence.

Remarks:

1. The Cashless Medical Service is a value-added service and subject to terms and conditions. To use the Cashless Medical Service, a Pre-approval Form for Cashless Medical Service ("Pre-approval Form") must be submitted to us for approval prior to the hospital admission. Cigna Healthcare requires 5 working days upon receipt of a completed form and supporting medical documents to process the application. We will confirm your application by issuing you a Letter of Guarantee relating to application for Cashless Medical Service (CMS) which sets out the conditions of the Cashless Medical Service arrangement. We have the absolute discretion to decline the Cashless Medical Service application based on information provided by the Insured Person and/or Policy Holder, if the Cashless Medical Service application does not include valid, sufficient and complete information about the Insured Person's medical condition or for credit card authorization. All Cashless Medical Service approvals provided by us are subject to the deductible level and benefit limit of the Policy. The Insured Person and/or Policy Holder are responsible for settling any amount not covered by their Policy.
2. Cigna Care Manager Service is a value-added service and subject to terms and conditions. Medical support service and value-added services arranged by Care Manager are subject to individual cases.
3. Applicable to Semi-Private Room (a single or double occupancy room, with a shared bath or shower room, in a Hospital) type only.
4. This service is a value-added service provided by an independent third-party service provider and does not form part of the contractual benefit under your policy. Cigna Healthcare reserves the right to amend or cancel the service at any time without prior notice at its absolute discretion. Cigna Healthcare is not the service provider for this service. The relevant service provider is not our agent, and vice versa. We make no representation, warranty or undertaking as to the quality and availability of the service, and do not accept any responsibility or liability for the service provided by the service provider. Under no circumstances will Cigna Healthcare be responsible or liable for acts or omissions of the service provider in the provision of the service.

## Plan at a glance

Plan type	This product is a standalone individual policy which aims to provide hospitalization benefits. It is an indemnity insurance policy without cash value.
Policy term and Premium structure	1 year and annually renewable  The plan provides a protection period of 1 year and guaranteed renewable up to Age 100 of Insured Person, with payment period until the end of protection period. Premium rate will increase with Age, and yearly adjustable.
Entry Age (at last birthday)	15 days to Age 80
Enrolment	No medical examination required before enrolment
Premium payment frequency	Annual / Monthly
Policy currency	HKD

## Flexi Plan options

The following list is for reference only. For complete details, please refer to the Terms and Conditions.

	Supplementary benefits for enhanced confidence	Premium coverage with comprehensive protection to keep you secure	
Certified Plan(s)	Cigna VHIS Series – Flexi Plan (SMM)	Cigna VHIS Series – Flexi Plan (Superior)	
Area of coverage	Worldwide <sup>1</sup>	Asia <sup>3,4</sup>	
Choice of ward class	No restriction, except for supplementary major medical benefit <sup>2</sup>	Standard Ward <sup>4</sup>	Semi-Private Room <sup>4</sup>
Annual Deductible options	x	HK\$0 HK\$15,000 HK\$25,000	HK\$0 HK\$15,000 HK\$25,000 HK\$50,000 HK\$75,000
Annual Benefit Limit (Eligible expenses and expenses payable shall be subject to the benefit limit of each benefit item, coinsurance/deductible (if applicable) and the annual benefit limit)	HK\$1,000,000 per Policy Year	HK\$5,000,000 per Policy Year	HK\$30,000,000 per Policy Year
Lifetime Benefit Limit	Nil	Nil	
Hospitalization benefits	<div>✓</div> Please refer to the Benefit Schedule for details	No dollar limit	
Surgical benefits			
Prescribed Diagnostic Imaging Tests			
Prescribed Non-surgical Cancer treatments			
Psychiatric treatments			
Outpatient kidney dialysis	HK\$30,000 per Policy Year		
Home nursing for Confinement	\$700 per day Maximum 15 days per Policy Year	\$800 per day Maximum 90 days per Policy Year	\$1,000 per day Maximum 90 days per Policy Year
Companion Bed	\$450 per day Maximum 270 days per Policy Year	No dollar limit	
Accidental Emergency outpatient treatment	\$6,600 per Policy Year (Within 24 hours after the Accident)	No dollar limit (Within 24 hours after the Accident)	
Accidental Emergency dental treatment	\$6,600 per Policy Year (Within 2 weeks after the Accident)	No dollar limit (Within 2 weeks after the Accident)	
Enhanced Benefit: Supplementary major medical benefit	<div>✓</div> HK\$150,000 per Policy Year Subject to 10% Coinsurance	<div>x</div> No dollar limit for the core benefits	

### Remarks:

- Psychiatric treatments benefit is limited to Hong Kong only.
- Supplementary major medical benefit is restricted to Eligible Expenses and expenses incurred during Confinement in a Standard Ward (a room in a Hospital with more than double occupancy) only.
- "Asia" refers to Afghanistan, Australia, Bangladesh, Bhutan, Brunei, Cambodia, mainland China, Hong Kong, India, Indonesia, Japan, Kazakhstan, Kyrgyzstan, Laos, Macau, Malaysia, Maldives, Mongolia, Myanmar, Nepal, New Zealand, North Korea, Pakistan, the Philippines, Singapore, South Korea, Sri Lanka, Taiwan, Tajikistan, Thailand, Timor-Leste, Turkmenistan, Uzbekistan, and Vietnam.
- In the situations described below, the benefit limits of the Standard Plan shall apply (the Deductible and Lifetime Benefit Limit stated above will still apply).
  - Eligible Expenses and expenses for non-Emergency Treatments incurred outside Asia;
  - Eligible Expenses and expenses incurred during Confinement in a ward class higher than the Accommodation Room Type selected (except in case of involuntary ward upgrade); and/or
  - Eligible Expenses and expenses incurred in mainland China outside of hospitals of Tier 3 Class A

# Cigna VHIS Series – Flexi Plan (SMM)

Cigna's Flexi Plan (SMM) further extends the cover offered under the Standard Plan, and provides cover against costs associated with chronic kidney disease.

Level of ward class	No restriction, except for supplementary major medical benefit <sup>1</sup>
VHIS Certification Number	F00012-01-000-03
Area of coverage	Worldwide <sup>2</sup>
Choice of healthcare services providers	No restriction
Annual Benefit Limit (Eligible Expenses and expenses payable shall be subject to the benefit limit of each benefit item, coinsurance (if applicable) and the annual benefit limit)	HK\$1,000,000 per Policy Year
Lifetime Benefit Limit	Nil

## Outpatient kidney dialysis



Kidney disease is one of the most common “urban diseases”. It requires fast, efficient care and typically involves ongoing dialysis treatment. What torments kidney patients the most is to receive dialysis treatment two to three times a week and have to pay the related expenses incurred, resulting in a long-term heavy financial burden. Cigna's Flexi Plan (SMM) takes away that worry by providing you with **up to HK\$30,000 per year to cover the expenses of outpatient kidney dialysis treatments – sufficient for most dialysis circumstances.**

## Supplementary major medical benefit



Apart from outpatient kidney dialysis coverage, the Flexi Plan (SMM) includes **an extra cover of HK\$150,000 in the form of a supplementary major medical benefit**, subject to annual limit of HK\$1,000,000 and no lifetime benefit limit. In case of serious Disability in which medical expenses exceed the individual benefit limits, the supplementary major medical benefit covers the remaining expenses in a Standard Ward (a room in a Hospital with more than double occupancy).

### Remarks:

1. Supplementary major medical benefit is restricted to Eligible Expenses and expenses incurred during confinement in a Standard Ward (a room in a Hospital with more than double occupancy) only.
2. Psychiatric treatments benefit is limited to Hong Kong only.



## Benefit Schedule

Benefits are reimbursed on Medically Necessary and Reasonable and Customary basis, unless otherwise specified. For more information, please refer to "Important Information" of this brochure or Policy Provision.

Benefit items <sup>1</sup>	Benefit limit (in HKD)
(a) <b>Room and board</b>	\$1,200 per day Maximum 270 days per Policy Year
(b) <b>Miscellaneous charges</b> Covers the Eligible Expenses charged on miscellaneous charges (including medical devices, additional surgical appliances) incurred in a setting of Hospital Confinement and Day Case Procedure	\$14,000 per Policy Year
(c) <b>Attending doctor's visit fee</b>	\$1,200 per day Maximum 270 days per Policy Year
(d) <b>Specialist's fee<sup>2</sup></b>	\$4,300 per Policy Year
(e) <b>Intensive care</b>	\$3,500 per day Maximum 90 days per Policy Year
(f) <b>Surgeon's fee<sup>4</sup></b>	Per surgery, subject to surgical category for the surgery/ procedure in the Schedule of Surgical Procedures – <ul style="list-style-type: none"> <li>• Complex \$70,000</li> <li>• Major \$35,000</li> <li>• Intermediate \$17,500</li> <li>• Minor \$8,750</li> </ul>
(g) <b>Anaesthetist's fee</b>	35% of Surgeon's fee payable <sup>3</sup>
(h) <b>Operating theatre charges</b>	35% of Surgeon's fee payable <sup>3</sup>
(i) <b>Prescribed Diagnostic Imaging Tests</b> Covers computed tomography ("CT" scan), magnetic resonance imaging ("MRI" scan), positron emission tomography ("PET" scan), PET-CT combined and PET-MRI combined performed during Confinement or in a setting for providing Medical Services to a Day Patient	\$20,000 per Policy Year Subject to 30% Coinsurance
(j) <b>Prescribed Non-surgical Cancer Treatments<sup>4</sup></b> Covers chemotherapy, radiotherapy (including proton therapy, gamma knife and cyber knife), targeted therapy, immunotherapy and hormonal therapy performed during Confinement or in a setting for providing Medical Services to a Day Patient	\$80,000 per Policy Year
(k) <b>Pre- and post-Confinement/Day Case Procedure outpatient care<sup>2</sup></b> <ul style="list-style-type: none"> <li>• Prior outpatient visits or Emergency consultation (including but not limited to consultation, western medication prescribed or diagnostic test)</li> <li>• Follow-up outpatient visits (including but not limited to consultation, western medication prescribed, dressings, physiotherapy, occupational therapy, speech therapy or diagnostic test)</li> </ul>	\$1,000 per visit, up to \$15,000 per Policy Year <ul style="list-style-type: none"> <li>• Maximum 2 prior outpatient visits or Emergency consultations per Confinement/Day Case Procedure</li> <li>• Maximum 10 follow-up outpatient visits per Confinement/Day Case Procedure (within 90 days after discharge from Hospital or completion of Day Case Procedure)</li> </ul>

Benefit items <sup>1</sup>	Benefit limit (in HKD)
(l) <b>Psychiatric treatments</b> Covers the Eligible Expenses charged on the psychiatric treatments during Confinement in Hong Kong as recommended by a Specialist	\$30,000 per Policy Year
(m) <b>Outpatient kidney dialysis</b>	\$30,000 per Policy Year
(n) <b>Home nursing for Confinement</b>	\$700 per day Maximum 15 days per Policy Year
(o) <b>Companion Bed</b>	\$450 per day Maximum 270 days per Policy Year
(p) <b>Accidental Emergency outpatient treatment</b> Covers Eligible Expenses charged on the Emergency Treatment of an Injury in the outpatient department of a Hospital	\$6,600 per Policy Year (Within 24 hours after the Accident)
(q) <b>Accidental Emergency dental treatment</b> Covers expenses charged by a registered dentist, a registered medical practitioner or a hospital solely for Emergency Treatment which is necessitated by an Injury to sound natural teeth (including consultation, staunch bleeding, tooth extraction, root canals and x-ray) in a legally registered dental clinic or a hospital, given to the Insured Person	\$6,600 per Policy Year (Within 2 weeks after the Accident)
(r) <b>Supplementary major medical benefit<sup>5</sup></b> Applicable to benefit item (a) – (q)	\$150,000 per Policy Year Subject to 10% Coinsurance (except for Medical Services provided to Insured Person in a setting for providing Medical Services to a Day Patient where Coinsurance will not apply)

Remarks:

1. Unless otherwise specified, Eligible Expenses incurred in respect of the same item shall not be recoverable under more than one benefit item in the table above.
2. The Company shall have the right to ask for proof of recommendation e.g. written referral or testifying statement on the claim form by the attending doctor or Registered Medical Practitioner.
3. The percentage here applies to the Surgeon's fee actually payable or the benefit limit for the Surgeon's fee according to the surgical categorisation, whichever is the lower.
4. This benefit shall be payable according to the relevant surgical category and the categorisation of such surgical procedure under the Schedule of Surgical Procedures. If a medically necessary surgical procedure performed is not included in the Schedule of Surgical Procedures, the Company may reasonably determine its surgical category.
5. For Eligible Expenses and expenses resulting from Confinement, this benefit shall only be payable for Medical Services provided in a Standard Ward (a room in a Hospital with more than double occupancy). For Confinement in a higher ward class (e.g. Semi-Private or Private), this benefit shall only be payable if the Hospital provides satisfactory evidence to show the ward upgrade was involuntary (i.e. where ward upgrade was required due to [i] Isolation, [ii] room shortage in case of an Emergency; or [iii] other reasons not involving personal preference of the Policy Holder and/or the Insured Person). For full details of the calculation of this benefit, please refer to the Terms and Conditions and the Flexi Plan (SMM) Endorsement of the Terms and Benefits.

# Cigna VHIS Series – Flexi Plan (Superior)

Cigna's Flexi Plan (Superior) provides the most comprehensive protection for treatment expenses, and goes further still for a totally hassle-free experience.

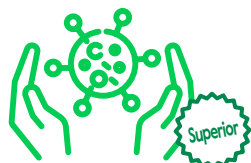
Accommodation Room Type	Standard Ward <sup>1</sup> A room in a Hospital with more than double occupancy	Semi-Private Room <sup>1</sup> A single or double occupancy room, with a shared bath or shower room in a Hospital
VHIS Certification Numbers	F00016-06-000-03 F00016-07-000-03 F00016-08-000-03	F00016-01-000-05 F00016-02-000-05 F00016-03-000-05 F00016-04-000-05 F00016-05-000-04
Area of coverage	Asia <sup>1,2,3</sup>	
Choice of healthcare service providers	Subject to restrictions <sup>1</sup>	
Annual Benefit Limit (Eligible Expenses and expenses payable shall be subject to the benefit limit of each benefit item, deductible (if applicable) and the annual benefit limit)	HK\$5,000,000 per Policy Year	HK\$30,000,000 per Policy Year
Lifetime Benefit Limit	Nil	
Deductible options	HK\$0   HK\$15,000   HK\$25,000	HK\$0   HK\$15,000   HK\$25,000   HK\$50,000   HK\$75,000

## No sub-limits on core benefits



The Flexi Plan (Superior) **imposes no sub-limits on the plan's core benefits** when hospital treatment takes place in the Accommodation Room Type selected. No out-of-pocket expenses are incurred for most core benefits either. In addition, these benefits are not limited to Hong Kong, but also covered **throughout Asian regions**.

## Most comprehensive cancer treatment



The Flexi Plan (Superior) also provides **full cover against Prescribed Non-surgical Cancer Treatments** such as chemotherapy, radiotherapy, targeted therapy, immunotherapy and hormonal therapy, subject to your Annual Benefit Limit. You can receive treatment at ease without worrying about your medical budget.

### Remarks:

- In the situations described below, the benefit limits of the Standard Plan shall apply (the Deductible and Lifetime Benefit Limit stated above will still apply).
  - Eligible Expenses and expenses for non-Emergency Treatments incurred outside Asia;
  - Eligible Expenses and expenses incurred during Confinement in a ward class higher than the Accommodation Room Type selected (except in case of involuntary ward upgrade); and/or
  - Eligible Expenses and expenses incurred in mainland China outside of hospitals of Tier 3 Class A
- Psychiatric treatments benefit is limited to Hong Kong only.
- "Asia" refers to Afghanistan, Australia, Bangladesh, Bhutan, Brunei, Cambodia, mainland China, Hong Kong, India, Indonesia, Japan, Kazakhstan, Kyrgyzstan, Laos, Macau, Malaysia, Maldives, Mongolia, Myanmar, Nepal, New Zealand, North Korea, Pakistan, the Philippines, Singapore, South Korea, Sri Lanka, Taiwan, Tajikistan, Thailand, Timor-Leste, Turkmenistan, Uzbekistan, and Vietnam.

## Benefit Schedule

Benefits are reimbursed on Medically Necessary and Reasonable and Customary basis, unless otherwise specified. For more information, please refer to “Important Information” of this brochure or Policy Provision.

Accommodation Room Type	Standard Ward A room in a Hospital with more than double occupancy	Semi-Private Room A single or double occupancy room, with a shared bath or shower room in a Hospital
Benefit items <sup>1,2,3</sup>	Benefit limit (in HKD)	
(a) Room and board	No dollar limit	
(b) Miscellaneous charges Covers the Eligible Expenses charged on miscellaneous charges (including medical devices, additional surgical appliances) incurred in a setting of Hospital Confinement and Day Case Procedure		
(c) Attending doctor's visit fee		
(d) Specialist's fee <sup>4</sup>		
(e) Intensive care		
(f) Surgeon's fee <sup>5</sup>		
(g) Anaesthetist's fee		
(h) Operating theatre charges		
(i) Prescribed Diagnostic Imaging Tests <sup>4</sup> Covers computed tomography (“CT” scan), magnetic resonance imaging (“MRI” scan), positron emission tomography (“PET” scan), PET-CT combined and PET-MRI combined performed during Confinement or in a setting for providing Medical Services to a Day Patient		
(j) Prescribed Non-surgical Cancer Treatments Covers chemotherapy, radiotherapy (including proton therapy, gamma knife and cyber knife), targeted therapy, immunotherapy and hormonal therapy performed during Confinement or in a setting for providing Medical Services to a Day Patient	No dollar limit	
(k) Pre- and post-Confinement/Day Case Procedure outpatient care <sup>4</sup> <ul style="list-style-type: none"> <li>Prior outpatient visits or Emergency consultation (including but not limited to consultation, western medication prescribed or diagnostic test)</li> <li>Follow-up outpatient visits (including but not limited to consultation, western medication prescribed, dressings, physiotherapy, occupational therapy, speech therapy or diagnostic test)</li> </ul>		
(l) Psychiatric treatments Covers the Eligible Expenses charged on the psychiatric treatments during Confinement in Hong Kong as recommended by a Specialist		
(m) Outpatient kidney dialysis	No dollar limit	



Accommodation Room Type	Standard Ward A room in a Hospital with more than double occupancy	Semi-Private Room A single or double occupancy room, with a shared bath or shower room in a Hospital
(n) Home nursing for Confinement	\$800 per day Maximum 90 days per Policy Year	\$1,000 per day Maximum 90 days per Policy Year
(o) Companion Bed	No dollar limit	
(p) <b>Accidental Emergency outpatient treatment</b> Covers Eligible Expenses charged on the Emergency Treatment of an Injury in the outpatient department of a Hospital	No dollar limit (Within 24 hours after the Accident)	
(q) <b>Accidental Emergency dental treatment</b> Covers expenses charged by a registered dentist, a registered medical practitioner or a hospital solely for Emergency Treatment which is necessitated by an Injury to sound natural teeth (including consultation, staunch bleeding, tooth extraction, root canals and x-ray) in a legally registered dental clinic or a hospital, given to the Insured Person expenses	No dollar limit (Within 2 weeks after the Accident)	
(r) <b>Body check<sup>6</sup></b>	Nil	Once every three consecutive years of no-claim record
<b>Other benefits</b>	<b>Benefit limit (in HKD)</b>	
(a) <b>Second claims cash allowance<sup>7</sup></b>	\$800 per day Maximum 30 days per Policy Year	

Remarks:

- Eligible Expenses incurred in respect of the same item shall not be recoverable under more than one benefit item in the table above.
- The limits specified above for benefit items (a) – (q) apply only to Eligible Expenses and expenses for non-Emergency Treatments incurred in Asia. Claims incurred outside Asia shall be payable up to the benefit limits as stated in the benefit schedule of the Standard Plan Terms and Benefits, and if there is any remaining Deductible (if applicable), the benefit payable shall further be reduced by the remaining Deductible (if applicable).  
For the avoidance of doubt, "Asia" shall mean Afghanistan, Australia, Bangladesh, Bhutan, Brunei, Cambodia, mainland China, Hong Kong, India, Indonesia, Japan, Kazakhstan, Kyrgyzstan, Laos, Macau, Malaysia, Maldives, Mongolia, Myanmar, Nepal, New Zealand, North Korea, Pakistan, the Philippines, Singapore, South Korea, Sri Lanka, Taiwan, Tajikistan, Thailand, Timor-Leste, Turkmenistan, Uzbekistan, and Vietnam.  
For Eligible Expenses and expenses incurred in mainland China, the limits specified above for benefit items (a) – (q) apply only to Medical Services provided in Hospitals of Tier 3 Class A (or in other Hospitals where approval has been granted by the Company before Medical Services are provided). Eligible Expenses and expenses incurred in mainland China outside of this setting shall be payable up to the benefit limits as stated in the benefit schedule of the Standard Plan Terms and Benefits, and if there is any remaining Deductible (if applicable), the benefit payable shall further be reduced by the remaining Deductible (if applicable).
- For Eligible Expenses and expenses resulting from Confinement, the limits specified above for benefit items (a) to (l), (n) and (o) apply only to Medical Services provided in the Accommodation Room Type selected or a lower ward class. Claims incurred from Confinement in a higher ward class (e.g. illustrated in the table below) shall only be payable according to these limits if the Hospital provides satisfactory evidence to show the ward upgrade was involuntary (i.e. where ward upgrade was required due to [i] Isolation, [ii] room shortage in case of an Emergency, or [iii] other reasons not involving personal preference of the Policy Holder or Insured Person). Otherwise, such claims shall be payable up to the benefit limits as stated in the benefit schedule of the Standard Plan Terms and Benefits, and if there is any remaining Deductible (if applicable), the benefit payable shall further be reduced by the remaining Deductible (if applicable).

Accommodation Room Type	Actual Confined room type	Adjustment
Standard Ward (a room in a Hospital with more than double occupancy)	Semi-Private Room, Private Room or any room type above Private Room including suite, VIP or deluxe room	The benefits shall be payable up to the benefit limits as stated in the benefit schedule of the Standard Plan Terms and Benefits.
Semi-Private Room (a single or double occupancy room, with a shared bath or shower room in a Hospital)	Private Room or any room type above Private Room including suite, VIP or deluxe room	

- The Company shall have the right to ask for proof of recommendation e.g. written referral or testifying statement on the claim form by the attending doctor or Registered Medical Practitioner.
- This benefit shall be payable according to the relevant surgical category and the categorisation of such surgical procedure under the Schedule of Surgical Procedures. If a Medically Necessary surgical procedure performed is not included in the Schedule of Surgical Procedures, the Company may reasonably determine its surgical category.
- Applicable to appointed medical service provider(s) by Cigna Healthcare from time to time. A check-up coupon will be available after every 3 consecutive years of no-claim record.
- Where the Insured Person is Confined in a Hospital, and if room and board or intensive care is payable for such Confinement, provided that the Eligible Expenses charged by the Hospital on the cost of accommodation and meals or intensive care services are fully or partly paid by other insurance coverage that is not underwritten and issued by the Company, the Company shall pay this benefit for each day of such Confinement up to the applicable benefit limits and Annual Benefit Limit.

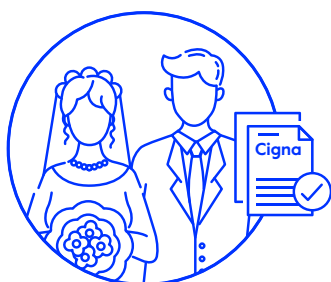
# Case Illustrations

The following examples are hypothetical and for illustrative purposes only.

## Cigna VHIS Series – Flexi Plan (SMM): Issac's story

<b>Policy Holder</b>	Issac
<b>Age</b>	30 (non-smoker)
<b>Background</b>	Issac got married when he was 30. For him, it was essential that such an important step in life has to be backed by solid and reliable protection against risks in the future. He's aware of the many benefits of the Cigna VHIS Series, and strongly felt that he and his wife deserve above average medical protection so that they could be hassle-free while working hard to build an ideal future together.
<b>Plan level</b>	Cigna VHIS Series – Flexi Plan (SMM)

### At Age 30



Issac got married and signed up for the Flexi Plan (SMM) when he was 30.

### Suffered a mild heart attack at Age 31



A year later, Issac suffered a mild heart attack. His attending doctor said that he had to undergo an angioplasty, a procedure which hospital, surgical and post-surgical care costs could be covered by the Flexi Plan (SMM).

### After recovery



Issac could continue to work hard with peace of mind to build an ideal future together with his wife.

### Benefit item (HK\$)

Room and board <b>\$2,250</b>	Operating theatre charges <b>\$8,750</b>
Pre- and post-Confinement/Day Case Procedure outpatient care <b>\$1,500</b>	
Surgeon's fee <b>\$35,000</b>	In excess of item limit <b>\$70,000</b>
Miscellaneous charges <b>\$14,000</b>	In excess of item limit <b>\$50,000</b>
Supplementary major medical benefit (\$50,000 + \$70,000) x 90% <b>\$108,000</b>	

Net benefit from Cigna VHIS Series - Flexi Plan (SMM):  
**HK\$147,768**

<b>Total claim payable</b>	<b>Tax benefit in the first year for both policies (based on a 15% Standard Rate)</b>
<b>\$169,500</b>	<b>\$1,718</b> \$11,450 x 15%
<b>=</b>	<b>+</b>
<b>Issac paid</b>	
<b>First year premium paid for both policies</b>	<b>Coinsurance borne by Issac out-of-pocket</b>
<b>\$11,450*</b> (\$5,725 x 2)	<b>\$12,000</b> (\$50,000 + \$70,000) x 10%
<b>-</b>	<b>-</b>

Remarks:

\*The premium level is subject to change from time to time due to medical inflation.

## Cigna VHIS Series – Flexi Plan (Superior): Helena's story

<b>Policy Holder</b>	<b>Helena</b>
<b>Age</b>	40 (non-smoker)
<b>Background</b>	Helena works for a major banking group and benefits from the bank's group cover insurance. She had assumed that the group cover was all anyone might need. Then, her colleague fell sick on a trip to Korea. Her short hospital stay in Seoul came with a big bill and only half of the medical expenses are reimbursed by the bank's group insurance. Since Helena is a keen traveller who loves taking short breaks around Asia, she signed up for the Flexi Plan (Superior) for both herself and her 10-year-old son.
<b>Plan level</b>	Cigna VHIS Series – Flexi Plan (Superior)
<b>Accommodation Room Type</b>	Semi-Private Room
<b>Deductible</b>	HK\$25,000 for her own policy   HK\$0 for her son's policy

### At Age 40



Helena signed up for the Flexi Plan (Superior) for both her 10-year-old son and herself when she was 40.

### Got injured on a trip at Age 42



Two years later, when driving with her family in Okinawa, Japan, Helena's rental car skidded on some gravel and plunged down a bank. Helena suffered significant injuries that required a week's stay in an Okinawa hospital.

### After recovery



Helena no longer had to worry about the coverage, and could continue to travel around the world with her family.

### Total medical expenses (HK\$)



Hospitalization expenses incurred in Japan  
**\$ 208,000**

–



Deductibles – covered by her group plan:  
**\$ 25,000**



**Full compensation by Flexi Plan (Superior) – no itemised amount limit**  
**\$ 183,000**



**Net benefit from Cigna VHIS Series – Flexi Plan (Superior):**  
**HK\$138,207**

**Total claim payable**



**\$183,000**

**Tax benefit for both policies (based on a 15% Standard Rate)**



**\$7,026**  
\$46,840 x 15%



**Helena paid**

**Total premium paid for both policies**



**\$51,819\***  
(\$7,310 + 7,599 + 7,931) + (\$9,698 + 9,654 + 9,627)

Remarks:

\*The premium level is subject to change from time to time due to medical inflation.

## Cigna VHIS Series – Flexi Plan (Superior): Iris's story

<b>Policy Holder</b>	Iris
<b>Age</b>	50 (non-smoker)
<b>Background</b>	Iris decided it was time to jump out of her comfort zone and start her own business at the Age of 50. But at mid-life, she was concerned that her decision meant leaving her employer's group medical plan, which she's benefited from for many years. To replace it, she wanted a plan that offered full medical cover, because she would need to devote all her energies to her business, and she didn't want to worry about limits and exclusions.
<b>Plan level</b>	Cigna VHIS Series – Flexi Plan (Superior)
<b>Accommodation Room Type</b>	Semi-Private Room
<b>Deductible</b>	HK\$0

### At Age 50



Iris signed up for the Flexi Plan (Superior) at the Age of 50.

### Iris had breast cancer at Age 53



Iris was diagnosed with breast cancer at the age of 53. Every aspect of her treatment was covered by her plan and carried out by top professionals without delay. The timely and high-quality procedures, including diagnostic imaging processes, a series of cancer treatments and breast-reconstruction following mastectomy, made Iris's recovery go well.

### After recovery



Iris's new business was not compromised. After treatments and suitable rest, Iris was once again able to pick up the reins of her business and forge ahead towards achieving her business goals.

### Benefit item (HK\$)

#### Pre-Confinement

Pre- and post-Confinement/Day Case Procedure outpatient care  
**\$580**

Prescribed Diagnostic Imaging Tests  
**\$27,000**

#### 1<sup>st</sup> Confinement for mastectomy

Hospitalization and surgical expenses  
**\$150,000**

Prescribed Diagnostic Imaging Tests  
**\$43,000**

#### 1<sup>st</sup> Post-Confinement

Pre- and post-Confinement/Day Case Procedure outpatient care  
**\$2,160**

#### 2<sup>nd</sup> Confinement for breast reconstruction

Hospitalization and surgical expenses  
**\$200,000**

#### 2<sup>nd</sup> Post-Confinement

Pre- and post-Confinement/Day Case Procedure outpatient care  
**\$1,740**

**Total medical expenses**  
**\$424,480**

**Net benefit from Cigna VHIS Series - Flexi Plan (Superior):**  
**HK\$305,650**

**Total claim payable**

**= \$424,480**

**Tax benefit**  
(based on a 15% Standard Rate)

**+ \$4,800**  
\$32,000x15%

**Iris paid**

**Total premium paid**

**- \$123,630\***  
(\$28,583+30,089+31,668+33,290)

Remarks:

\*The premium level is subject to change from time to time due to medical inflation.



# Important Information

The product information included in the brochure does not contain the full terms of the Policy and the full terms can be found in the Policy document.

## Cooling-off right and Policy Cancellation

You may cancel your policy and obtain a refund of any premium(s) and levy paid by you within the cooling-off period. The cooling-off period is the period of 30 calendar days immediately following either the day of delivery of the policy or the cooling-off notice to you or your nominated representative (whichever is the earlier). The cooling-off notice is a notice that will be sent to you or your nominated representative by Cigna Worldwide General Insurance Company Limited to notify you of the cooling-off period around the time the policy is delivered. To exercise this right, a written notice of cancellation must be signed by you and received directly by Cigna Worldwide General Insurance Company Limited at I6/F, 348 Kwun Tong Road, Kwun Tong, Kowloon, Hong Kong within the cooling-off period. No refund can be made if a claim has been made.

After the cooling-off period, the Policy Holder can request cancellation of the policy by giving thirty (30) days prior written notice to the Company, provided that there has been no benefit payment under the policy during the relevant Policy Year.

## Claims Procedure

To make a claim, please login to our customer portal or register at [www.mycigna.com.hk](http://www.mycigna.com.hk) or download our MyCigna HK app. For details of procedures by claims type, please visit the Company website [www.cigna.com.hk/en/customer-service/insurance-claim-procedure](http://www.cigna.com.hk/en/customer-service/insurance-claim-procedure).

## Reasonable and Customary

Reasonable and Customary shall mean, in relation to a charge for Medical Service, such level which does not exceed the general range of charges being charged by the relevant service providers in the locality where the charge is incurred for similar treatment, services or supplies to individuals with similar conditions, e.g. of the same sex and similar Age, for a similar Disability, as reasonably determined by the Company in utmost good faith. The Reasonable and Customary charges shall not in any event exceed the actual charges incurred.

In determining whether a charge is Reasonable and Customary, the Company shall make reference to the followings (if applicable)–

- (a) treatment or service fee statistics and surveys in the insurance or medical industry;
- (b) internal or industry claim statistics;
- (c) gazette published by the Government; and/or
- (d) other pertinent source of reference in the locality where the treatments, services or supplies are provided.

## Medically Necessary

Medically Necessary shall mean the need to have medical service for the purpose of investigating or treating the relevant Disability in accordance with the generally accepted standards of medical practice and such medical service must –

- (a) require the expertise of, or be referred by, a Registered Medical Practitioner;
- (b) be consistent with the diagnosis and necessary for the investigation and treatment of the Disability;
- (c) be rendered in accordance with standards of good and prudent medical practice, and not be rendered primarily for the convenience or the comfort of the Insured Person, his family, caretaker or the attending Registered Medical Practitioner;
- (d) be rendered in the setting that is most appropriate in the circumstances and in accordance with the generally accepted standards of medical practice for the medical services; and
- (e) be furnished at the most appropriate level which, in the prudent professional judgment of the attending Registered Medical Practitioner, can be safely and effectively provided to the Insured Person.

## Pre-existing Conditions

Pre-existing Condition means any Sickness, Disease, Injury, physical, mental or medical condition or physiological degradation, including congenital condition, that has existed prior to the Policy Issuance Date or the Policy Effective Date, whichever is the earlier. You are considered to be aware of a Pre-existing Condition where –

- (a) it has been diagnosed;
- (b) it has manifested clear and distinct signs or symptoms; or
- (c) medical advice or treatment has been sought, recommended or received.

If you are requested but fail to disclose to us upon submission of the insurance application, including any updates of and changes to the required information, that the Insured Person is suffering from a Pre-existing Condition of which the Policy Holder or the Insured

Person is aware or should have reasonably been aware of at the time of submission of Application, the Company has the right to declare the relevant insurance policy void, demand repayment of any benefits paid and/or refuse to provide coverage under its terms and benefits. In such event, the Company shall refund the premium.

## Premium

### 1. Premium Level

The premium corresponding to the plan you select is determined based on the Age and smoking habit of the Insured Person at the Policy Effective Date.

### 2. Non-payment of Premium

If you fail to pay the initial premium, your Policy will not take effect from the commencement date of your Policy. Except for the initial premium payment, there will be a grace period of 30 days after any premium due date. Your Policy will remain effective during this grace period. If any premium is not paid at the end of the grace period, your Policy will lapse on the premium due date and you will lose the insurance cover.

We will not make any claim payment or any other payment payable under the Policy, until we receive payment of all outstanding premium up to the date of the claim payment or when the Policy terminates.

### 3. Mis-statement of Age or Smoking Habit

If Age or smoking habit is mis-stated by you or any Insured Person (and the relevant Insured Person would still be eligible for coverage), we have the right to adjust the premiums payable based on the correct information.

### 4. Premium adjustment

The Company reserves the right to revise the Standard Premium of the Policy on the anniversary date or upon renewal. Factors leading to premium adjustment may include but are not limited to our overall experience in claims and expenses incurred by and/or in relation to this product.

## Duplicated policy

Each person can only be covered under one single "Cigna VHIS Series" policy. The series includes "Cigna VHIS Series – Standard Plan", "Cigna VHIS Series – Flexi Plan(SMM)", "Cigna VHIS Series – Flexi Plan (Superior)" and any other insurance policies that fall under the "Cigna VHIS Series" as defined and issued by the Company from time to time.

Existing holders of "Cigna HealthFirst Medical Plan Series" policies should contact the Company to discuss their options with regard to policy migration.

## Conversion of policy

If you have an existing medical insurance policy and intend to switch the coverage to this plan, please be aware of the potential implications in terms of insurability, claims eligibility and financial values regarding the change to the insurance arrangement.

Some benefits under the existing policy may be changed or not be covered under this plan due to changes in policy features, Age, health conditions, occupation, lifestyle, habit or recreational activities. Also, riders or supplementary benefits under your existing insurance policy may not be available under this plan.

Benefits under the existing insurance policy will no longer be payable to you if you surrender the policy or allow it to lapse. Besides, you may need to start a new waiting period (if any) in respect of certain benefits under the terms and conditions of the new policy.

## Renewal

This Policy shall be effective for an initial period of twelve (12) months and is thereafter guaranteed to be automatically renewable for successive periods of twelve (12) months up to the Age of one hundred (100) years of the Insured Person. The Company shall have the right to revise the Terms and Benefits of the Policy and/or the Premium upon each renewal.

## Termination

1. The Policy will be automatically terminated when one of the following happens:
  - The Insured Person passes away;
  - Any premium is not paid at the end of the grace period;
  - The Policy is terminated or not renewed by the Policy Holder; or
  - The Company has ceased to have the requisite authorization under the Insurance Ordinance to write or continue to write this Policy.
2. If there is any fraud, mis-statement or concealment in the application or declaration, or if you or your beneficiary makes a dishonest claim, we have the right to cancel the policy immediately. In such case, all the premium paid will not be returned and you shall immediately return all payment including claims paid by us under the Policy.

## Inflation risk

Your current planned benefit may not be sufficient to meet your future needs since the future cost of living may become higher than they are today due to inflation. Where the actual rate of inflation is higher than expected, you may receive less in real terms even if we meet all of our contractual obligations.



## Key Exclusions

The following list is for reference only and it is not a full list of exclusions. Please refer to the Terms and Conditions for the complete list and details of exclusions.

Cigna Healthcare shall not pay any benefits in relation to or arising from the following:

- I. Medical Services that are not Medically Necessary.
2. Confinement solely for the purpose of diagnostic procedures or allied health services, including but not limited to physiotherapy, occupational therapy and speech therapy.
3. Human Immunodeficiency Virus ("HIV") and its related Disability.
4. Dependence, overdose or influence of drugs, alcohol, narcotics or similar drugs or agents, self-inflicted injuries or attempted suicide, illegal activity, or venereal and sexually transmitted disease or its sequelae.
5. Services for beautification or cosmetic purposes, or correcting visual acuity or refractive errors that can be corrected by fitting of spectacles or contact lens.
6. Prophylactic treatment or preventive care, including but not limited to general check-ups, routine tests, screening procedures for asymptomatic conditions, immunisation or health supplements.
7. Dental treatment and oral and maxillofacial procedures performed by a dentist except for Emergency Treatment and surgery during Confinement arising from an Accident or to the extent covered by the Accidental Emergency dental treatment benefit. Follow up dental treatment or oral surgery after discharge from Hospital shall not be covered.
8. Maternity conditions and its complications.
9. Purchase of durable medical equipment or appliances.
10. Traditional Chinese Medicine treatment.
- II. Experimental or unproven medical technology or procedure in accordance with the common standard, or not approved by the recognised authority, in the locality where the treatment, procedure, test or service is received.
12. Congenital Condition(s) which have manifested or been diagnosed before the Insured Person attained the Age of eight (8) years.
13. Eligible Expenses which have been reimbursed under any law, or other medical program or insurance policy.
14. War, civil war, invasion, acts of foreign enemies, hostilities, rebellion, revolution, insurrection, or military or usurped power.

Remarks:

"Cigna Healthcare", "the Company", "We", "our" or "us" herein refers to Cigna Worldwide General Insurance Company Limited.

This product brochure is also available in Chinese. You may request for the Chinese version from us.  
此產品小冊子同時備有中文版本。閣下可向本公司索取中文版本。



## **Cigna Worldwide General Insurance Company Limited**

Tel: (852) 2560 1990  
[www.cigna.com.hk](http://www.cigna.com.hk)

The above insurance plan is underwritten by Cigna Worldwide General Insurance Company Limited, an authorized insurer to carry on general insurance business in or from Hong Kong. This brochure is intended to be distributed in Hong Kong only and shall not be construed as an offer to sell or a solicitation to buy or provision of any products of Cigna Healthcare outside Hong Kong. It is designed to provide you with a brief summary of the named insurance plan, its terms, conditions and exclusions, and is not a contract of insurance. For complete details of terms, conditions and exclusions, please refer to the Terms and Conditions. If there is any conflict between the Terms and Conditions and this brochure, the Terms and Conditions shall prevail.

This Policy is excluded from the application of the Contracts (Rights of Third Parties) Ordinance (the "Ordinance"). Other than the Company and the Policy Holder, a person who is not a party to the Policy (including, but not limited to, the Person Insured or the beneficiary) shall have no right under the Ordinance to enforce any term of this Policy.

Cigna Healthcare reserves the right to change any of the details in this brochure. In case of any disputes about the content of this brochure, Cigna Healthcare's decision shall be final.